

GUN VIOLENCE PREVENTION SERIES



First Presbyterian
Church of Charlotte

October 29, 2023

A dark blue silhouette of a city skyline with various building shapes, including a prominent tower with a pointed top and a rounded building on the right. The skyline is set against a white background.

David Jacobs, M.D.

Trauma and Acute-Care Surgeon and Medical Director of Atrium's
Hospital-Based Violence Intervention Program "Project BOOST"

Violence Prevention *in* Charlotte



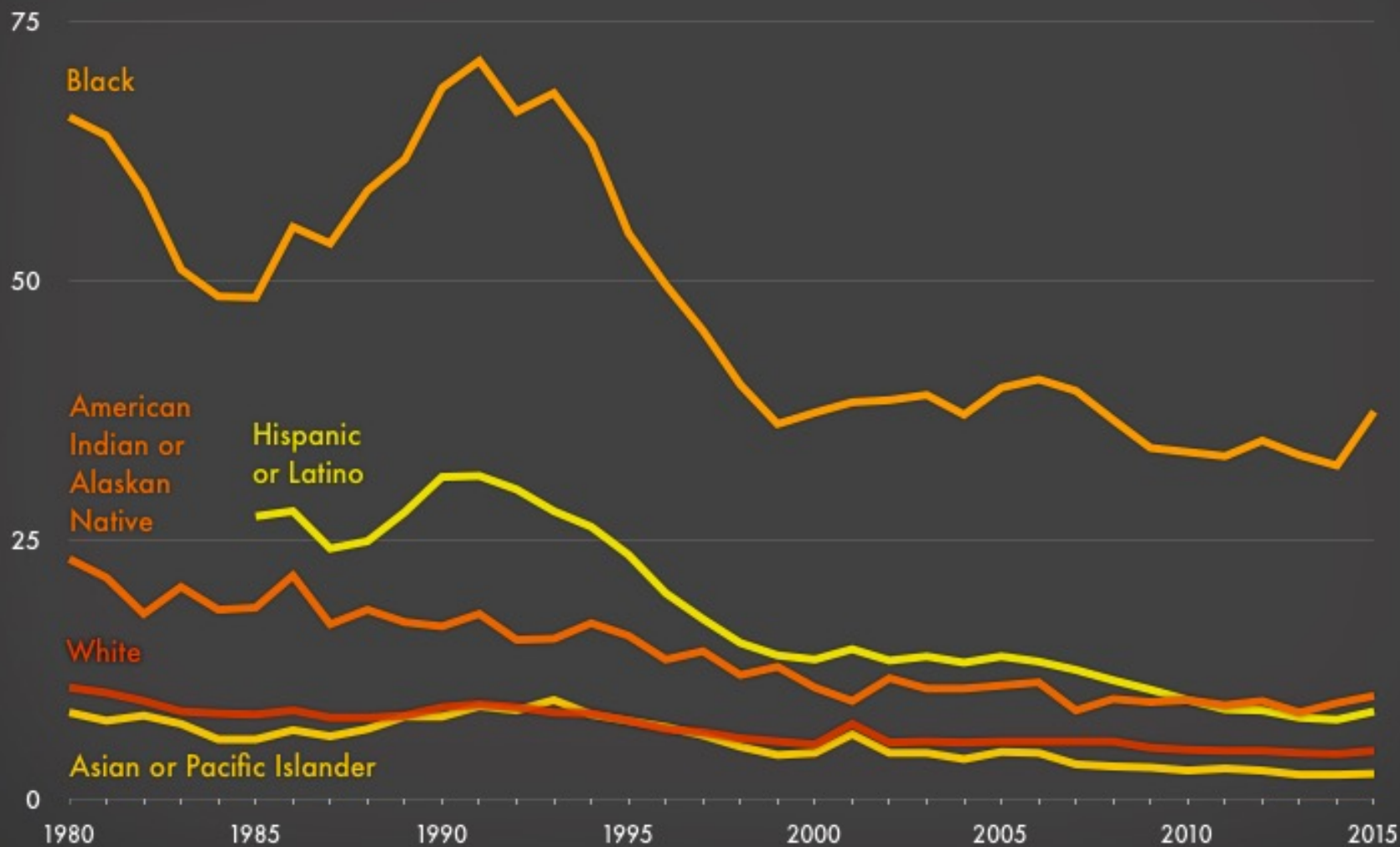
David G. Jacobs, MD; Atrium Health-Surgery/Trauma; October 29, 2023

Violence as a Public Health Problem

Violence in America is a disease of young and poor, men of color, with the handgun serving as the most common disease vector. While **we seem to have made some progress** conquering this disease over the past 50-60 years, much work remains to be done...

Changes in male homicide rates by race 1980-2015

Number of homicides of males per 100,000 population, 1980 – 2015



GUN VIOLENCE ARCHIVE 2023

Evidence Based Research - since 2013

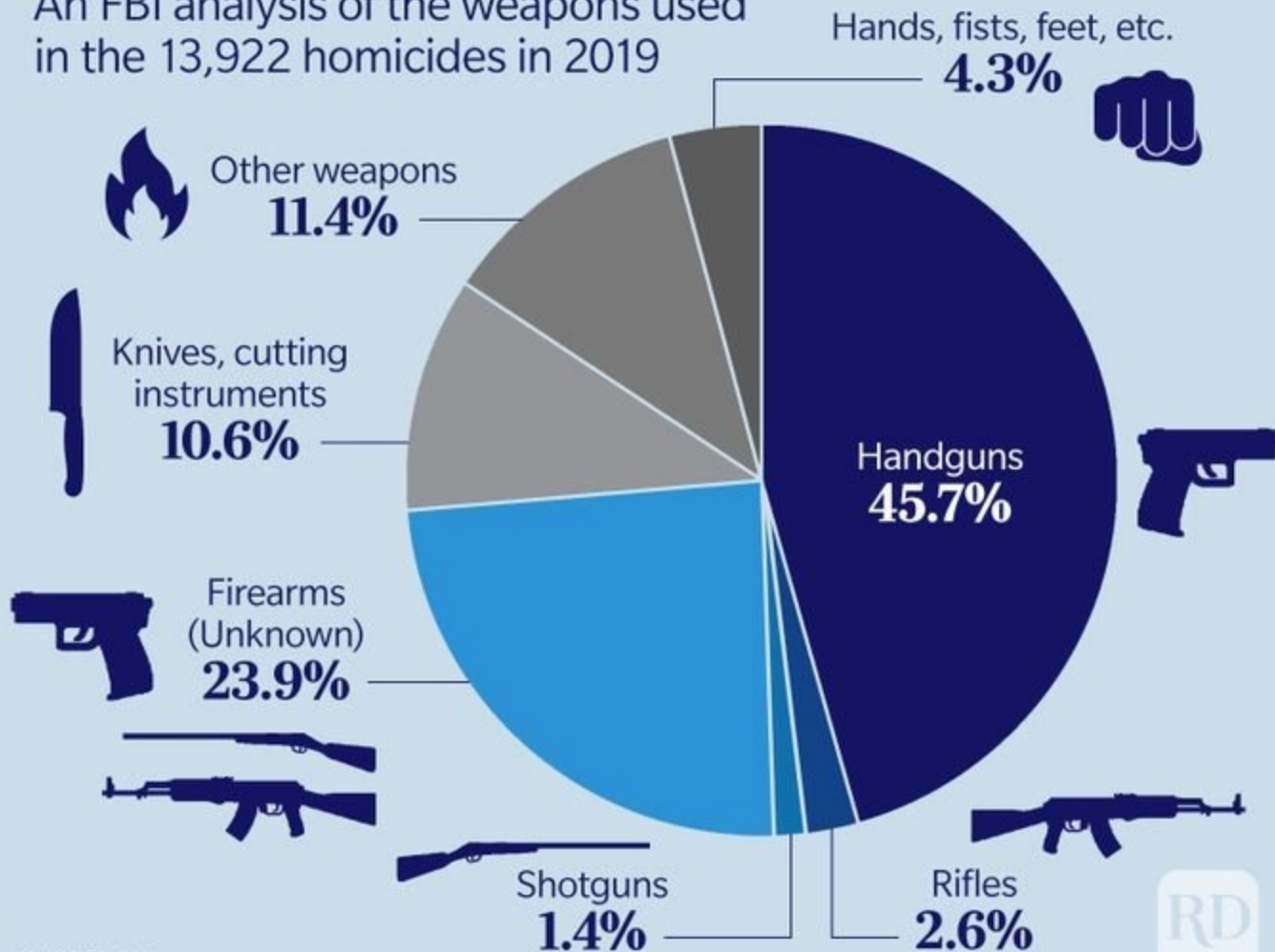
<i>GVA - Seven Year Review</i>	2016	2017	2018	2019	2020	2021	2022
Deaths - Willful, Malicious, Accidental	15,139	15,742	14,943	15,509	19,558	21,009	20,200
Suicides by Gun	22,938	23,854	24,432	23,941	24,292	26,328	Pending
Injuries - Willful, Malicious, Accidental	30,586	31,358	28,285	30,199	39,542	40,603	38,550
Children [aged 0-11] Killed or Injured	665	734	665	696	1,001	1,065	995
Teens [aged 12-17] Killed or Injured	3,154	3,296	2,883	3,129	4,159	4,645	5,157
Mass Shooting	383	348	336	417	610	690	647
Murder-Suicide	549	608	623	632	570	594	670
Defensive Use [DGU]	1,993	2,118	1,889	1,619	1,513	1,295	1,178
Unintentional Shooting	2,235	2,065	1,696	1,912	2,336	2,027	1,626

PUBLISHED DATE: October 28, 2023

Total Number of GV Deaths - ALL Causes⁴	35,497
Homicide/Murder/Unintentional/DGU ¹	15,631
Suicide ³	19,866

The Majority of Murders in America Involve Guns

An FBI analysis of the weapons used in the 13,922 homicides in 2019



SOURCE: FBI



What Causes Violence?

VIOLENCE



RACISM

FAMILY ISSUES

FAILURES IN EDUCATION

FAILURES IN JUSTICE SYSTEM

HEALTH ISSUES

POVERTY

A LACK OF YOUTH VOICE

A LACK OF ECONOMIC OPPORTUNITY

Violence as a Public Health Problem

- Treats violence as a disease that:
 - Occurs in specific patient populations
 - Can be spread from person to person, community to community, and generation to generation
 - Has specific known causes
 - Has known effective treatments

The Pair of ACE's

ADVERSE CHILDHOOD EXPERIENCES

Maternal Depression

Emotional &
Sexual Abuse

Substance
Abuse

Domestic Violence

Physical &
Emotional Neglect

Mental Illness

Divorce

Incarceration

Homelessness

ADVERSE COMMUNITY ENVIRONMENTS

Poverty

Discrimination

Community Disruption

Lack of Opportunity, Economic Mobility & Social Capital

Violence

Poor Housing
Quality & Affordability



“Community” Violence in Charlotte



Distinct spatial pattern
described as an “arc” of
communities of color and
concentrated poverty

Social Determinants of Health

Impact on Violence

Social Determinants of Health are Linked to Gun Homicide Rates in the United States

Social Mobility
(ability to climb the socioeconomic ladder)



25% ↓

Trust in Institutions
(e.g. government, media, corporations)



19% ↓

Welfare Spending
(e.g. unemployment, public assistance programs)



14% ↓

Income Gap Between
the Rich and Poor



8% ↑

Associated Changes in Neighborhood Gun Homicide Rates

Where is the Land of Opportunity?
The Geography of Intergenerational Mobility in the United States*

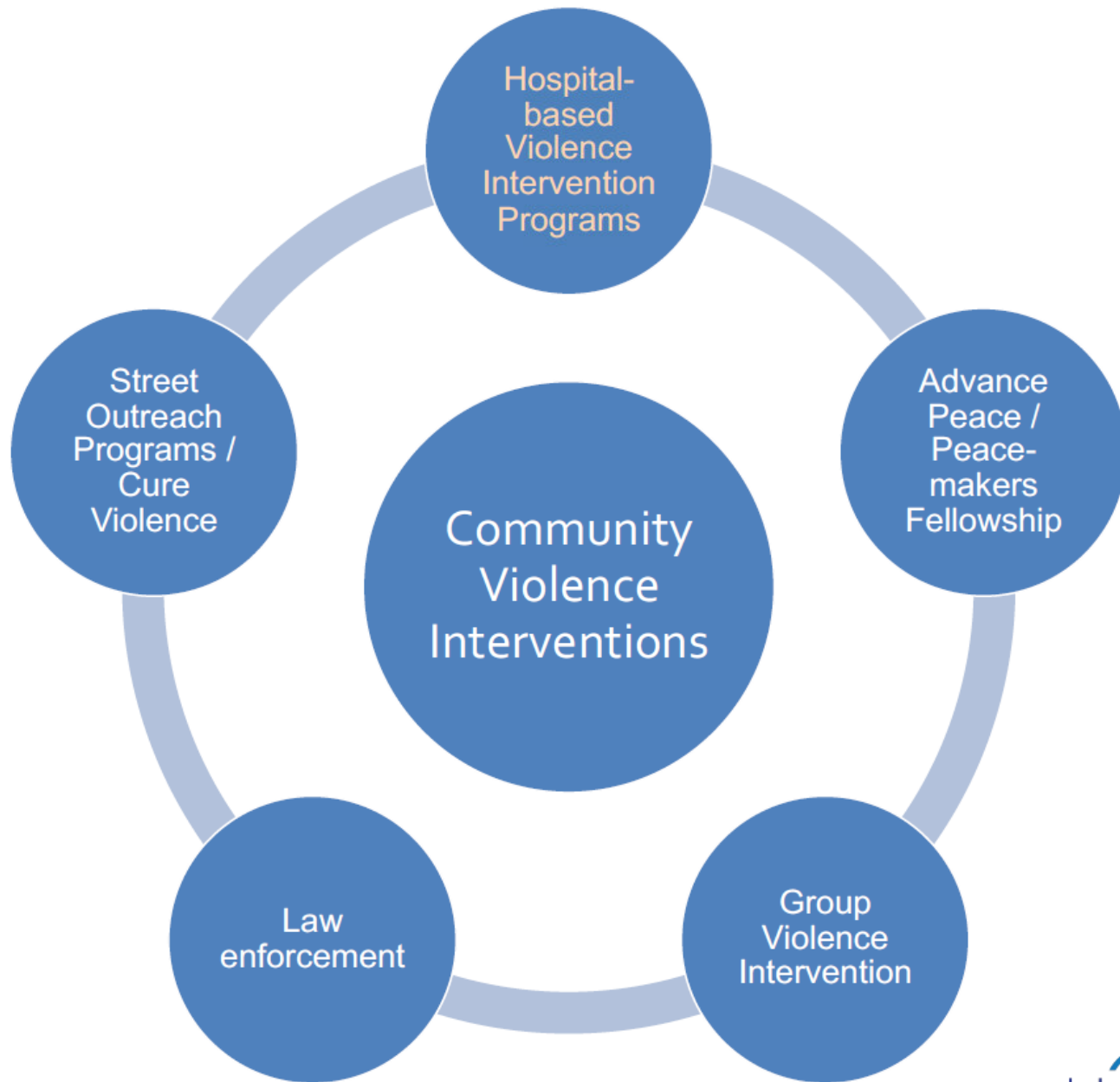
Raj Chetty, Harvard University and NBER
Nathaniel Hendren, Harvard University and NBER
Patrick Kline, UC-Berkeley and NBER
Emmanuel Saez, UC-Berkeley and NBER

June 2014

TABLE III
Intergenerational Mobility in the 50 Largest Commuting Zones

Upward Mob. Rank	CZ Name	Population	Absolute Upward Mobility	P(Child in Q5 Parent in Q1)	Pct. Above Poverty Line	Relative Mobility Rank-Rank Slope
(1)	(2)	(3)	(4)	(5)	(6)	(7)
1	Salt Lake City, Utah	1,426,729	46.2	10.8	77.3	0.264
2	Pittsburgh, Pennsylvania	2,561,364	45.2	9.5	74.9	0.359
3	San Jose, California	2,393,183	44.7	12.9	73.5	0.235
4	Boston, Massachusetts	4,974,945	44.6	10.5	73.7	0.322
5	San Francisco, California	4,642,561	44.4	12.2	72.5	0.250
6	San Diego, California	2,813,833	44.3	10.4	74.3	0.237
7	Manchester, New Hampshire	1,193,391	44.2	10.0	75.0	0.296
8	Minneapolis, Minnesota	2,904,389	44.2	8.5	75.2	0.338
9	Newark, New Jersey	5,822,286	44.1	10.2	73.7	0.350
10	New York, New York	11,781,395	43.8	10.5	72.2	0.330
40	Cleveland, Ohio	2,661,167	38.2	5.1	68.7	0.405
41	Nashville, Tennessee	1,246,338	38.2	5.7	67.9	0.357
42	New Orleans, Louisiana	1,381,652	38.2	5.1	69.5	0.397
43	Cincinnati, Ohio	1,954,800	37.9	5.1	66.4	0.429
44	Columbus, Ohio	1,663,807	37.7	4.9	67.1	0.406
45	Jacksonville, Florida	1,176,696	37.5	4.9	68.9	0.361
46	Detroit, Michigan	5,327,827	37.3	5.5	68.5	0.358
47	Indianapolis, Indiana	1,507,346	37.2	4.9	67.5	0.398
48	Raleigh, North Carolina	1,412,127	36.9	5.0	67.3	0.389
49	Atlanta, Georgia	3,798,017	36.0	4.5	69.4	0.366
50	Charlotte, North Carolina	1,423,942	35.8	4.4	67.0	0.397





Hospital-Based Violence Intervention

Violent Injury



Hospital: "Window of Opportunity"



Consequences of Trauma



Physical Wounds



Emotional Wounds



Self Medication



Joblessness



Court
Involvement

HVIP



Assessment



Psychoeducation



Case Management



Counseling/Therapy



SELF Groups

Goals



Safety



Managing
Emotions



Loss/Letting Go



Future



Health Care



Education



Jobs

HVIP @ Atrium (Project BOOST)

»» Atrium's Hospital Violence Intervention Program

Who We Serve:

All patients ages 15-25 presenting with intentional injury mechanisms (GSWs, stabbings, assaults, etc.)

Our Approach



Identify patients at time of initial presentation to CMC Main (ED, In-Patient Admission or Out-Patient Office Visit)

Comprehensive evaluation of patients to identify health and social needs

Connect clients to tailored resources through referrals on the Community Resource Hub

Provide long-term follow-up with participants to ensure adherence to plan

Referral Exclusions: selfinflicted injuries, domestic violence, accidents